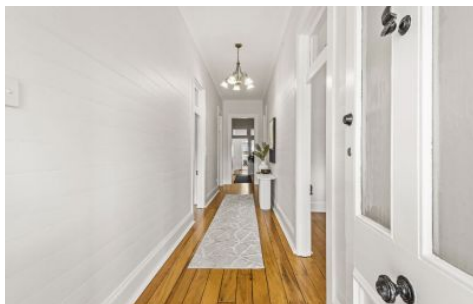


SAMANTHA WILSON

PROPERTY



8 Wharf Street Broadwater NSW

4 2 4

This bright and stylish home is completely renovated and was built in 1884. Located in a peaceful setting capturing glorious afternoon sunsets over the river.

Featuring soaring ceilings, original polished floorboards, four spacious bedrooms, enormous lounge with fireplace, designer kitchen with SMEG appliances, open plan dining and lounge, two bathrooms plus study.

With multiple living zones to accommodate large extended families, guests or dual living arrangements.

Features include:

- Original polished teak floorboards throughout
- Kitchen with stone bench tops, pantry and breakfast bar
- Soaring 13 foot ceilings

Price : Contact Agent
Type : House
Building : 221 sqm
Land Size : 1012 sqm
View : <https://www.samanthawilsonproperty.com.au/8699681>



Samantha Wilson
0418 838 676



Scale in metres. Dimensions are approximate. All information contained herein is gathered from sources we believe to be reliable, however we cannot guarantee its accuracy and interested persons should rely on their own enquiries.