


SAMANTHA WILSON

PROPERTY



42 Fitzroy Street WARDELL NSW

3  **1**  **4** 

Nestled in a peaceful location is this solid brick and tile three bedroom home well out of flood area, with open plan lounge/dining plus a covered outdoor entertaining area.

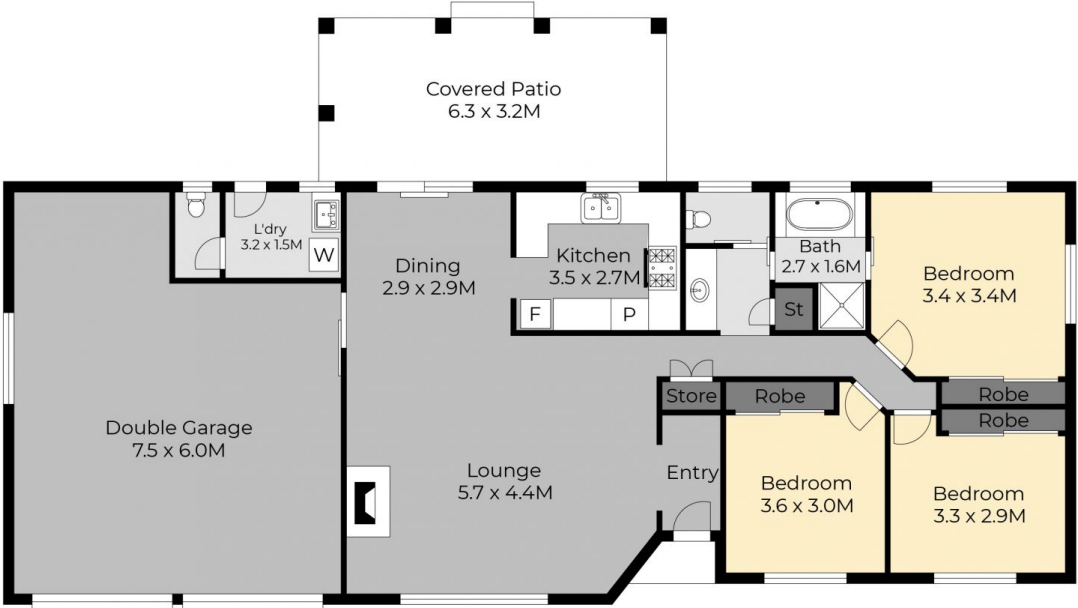
This fully fenced yard has plenty of room for the kids/pets and ample storage space for boat and caravan.

Features include:

- Three bedrooms with built-in robes
- Large living area plus outdoor entertaining deck
- Kitchen with plenty of cupboard space
- Bathroom, separate shower and bath, toilet and sink
- Second toilet in garage
- Air conditioning
- Fireplace
- Double lock-up garage
- Ample storage for caravan, boat and trailer

Type : House
Building : 124 sqm
Land Size : 734 sqm
View : <https://www.samanthawilsonproperty.com.au/7967320>

42 Fitzroy Street, Wardell.



Scale in metres. Dimensions are approximate. All information contained herein is gathered from sources we believe to be reliable, however we cannot guarantee its accuracy and interested persons should rely on their own enquiries.