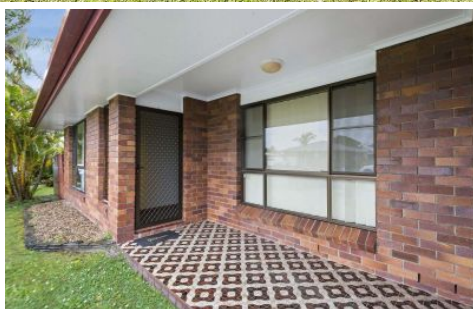


SAMANTHA WILSON

PROPERTY



1/4 Fern Place EVANS HEAD NSW

3 1 3

This brick and tile three bedroom unit is located in a peaceful cul-de-sac, and would be ideal for retirees or young family looking to get into the Evans Head market.

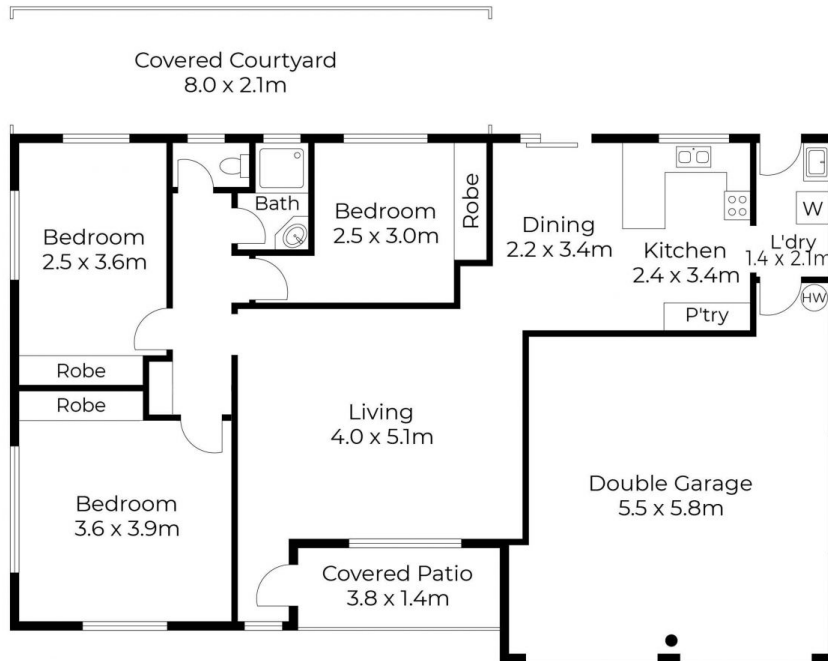
Situated at the front of a complex of three and located only a short distance to the Bowling Club, main street, cafes, beaches, medical centre, schools and pool/gym.

Features include:

- Three bedrooms with built-in robes
- Double lock-up garage with automatic door
- Private fenced side courtyard
- Undercover storage area
- Front patio
- Solar panels
- Parking space
- Pet friendly complex

Price : \$ 660,000
Type : Unit
Building : 6 sqm
Land Size : 780 sqm
View : <https://www.samanthawilsonproperty.com.au/7967314>

Unit 1, 4 Fern Place, Evans Head



Scale in metres. Dimensions are approximate. All information contained herein is gathered from sources we believe to be reliable, however we cannot guarantee its accuracy and interested persons should rely on their own enquiries.

POWERED BY **SMILE ELITE™**
PROUD PARTNERS WITH SYDNEY COUNTRY LIVING