




# SAMANTHA WILSON

PROPERTY



**1/25 Booyong Street EVANS HEAD NSW**

**3**  **2**  **2** 

This comfortable sized three bedroom, two bathroom, brick and tiled duplex is conveniently located within walking distance to the bowling club, main street, cafes, beaches and schools.

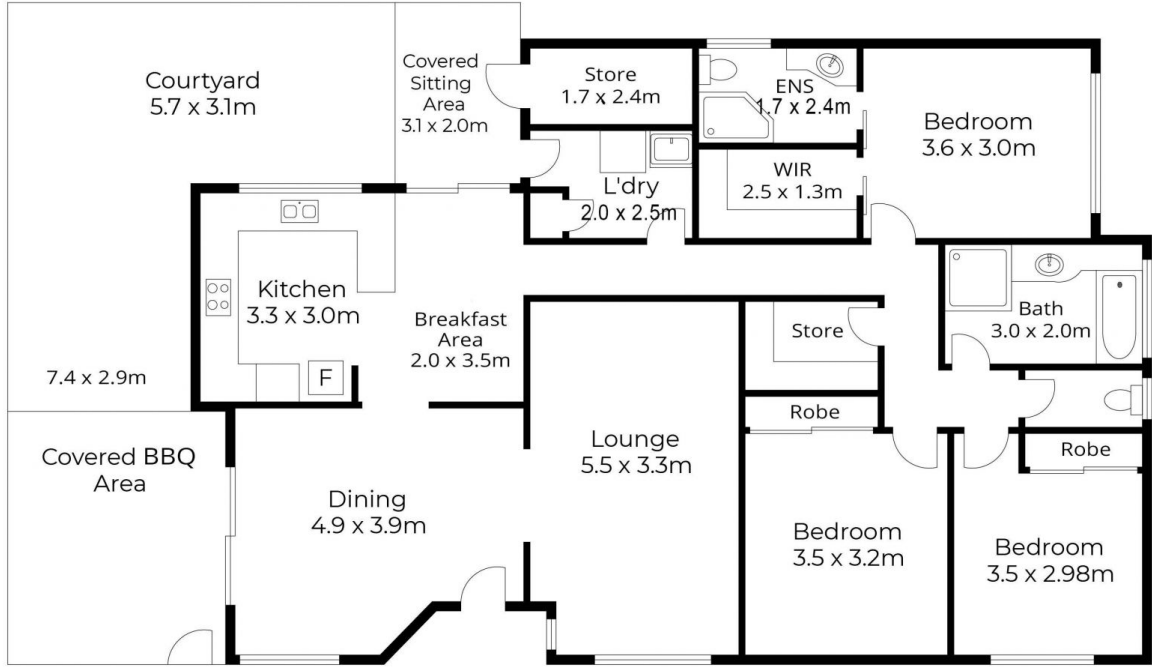
Open plan living, kitchen, lounge and dining areas leading out to a private courtyard. This property is sure to impress.

Features include:

- Main bedroom with walk-in robe and ensuite
- Two generous bedrooms with built-in robes
- Ducted heating and air-conditioning throughout
- Walk-in linen room
- Large laundry
- Private courtyard
- Low-maintenance garden

**Type** : Semi Detached  
**Building** : 14 sqm  
**Land Size** : 927 sqm  
**View** : <https://www.samanthawilsonproperty.com.au/7967313>

# Unit 1, 25 Booyong Street, Evans Head



Scale in metres. Dimensions are approximate. All information contained herein is gathered from sources we believe to be reliable, however we cannot guarantee its accuracy and interested persons should rely on their own enquiries.

POWERED BY **SMILE ELITE™**  
PROUD PARTNERS WITH SYDNEY COUNTRY LIVING