

# SAMANTHA WILSON

PROPERTY



## 48 Rileys Hill Road BROADWATER NSW

3 2 4

This two-storey brick and tiled family home overlooks the river in a peaceful location.

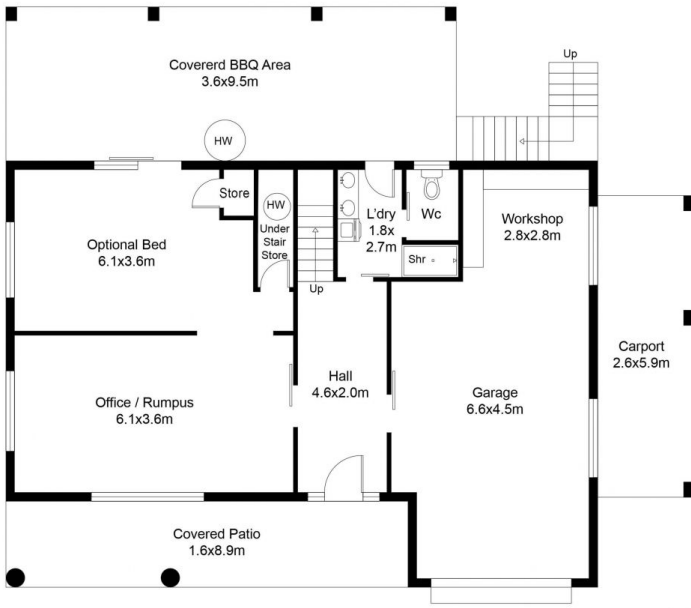
Upstairs consists of an open plan kitchen/dining and lounge area leading onto the front deck. Three large bedrooms all with built-ins and ceiling fans. Downstairs consists of office/rumpus, fourth bedroom, bathroom and laundry.

Large enclosed sunroom over looking fully fenced yard with magnificent views to the river, plenty of room for the kids and pets. If you like fishing look no further.

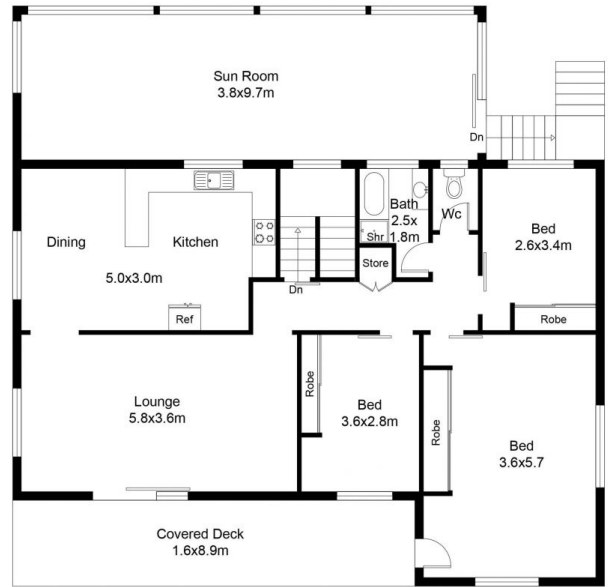
### Property features:

- 3 large bedrooms with built in robes
- 12 solar panels
- Water tank and bore water
- Single lock-up garage with ample storage space

**Type** : House  
**Building** : 14 sqm  
**Land Size** : 820 sqm  
**View** : <https://www.samanthawilsonproperty.com.au/7967296>



DOWNSTAIRS FLOOR PLAN



UPSTAIRS FLOOR PLAN



Scale in metres. Dimensions are approximate. All information contained herein is gathered from sources we believe to be reliable, however we cannot guarantee its accuracy and interested persons should rely on their own enquiries.