




SAMANTHA WILSON

PROPERTY



7 Woodburn Street WOODBURN NSW

4  2  6 

This bright two storey home is set on a quiet street with rear lane access. Four bedrooms, two bathrooms (three toilets), open plan kitchen/lounge/dining areas, with a front deck overlooking the river.

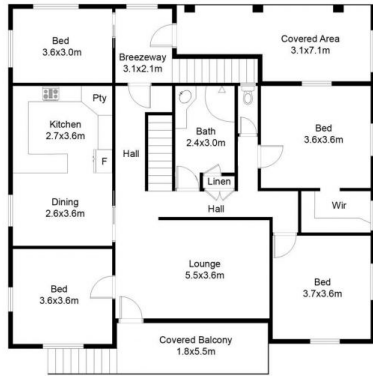
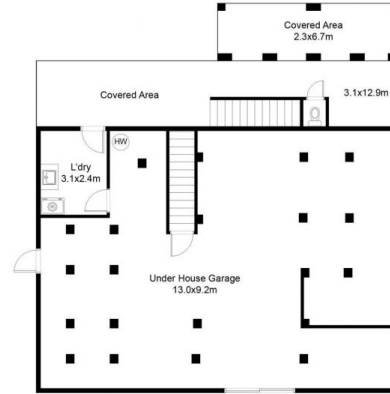
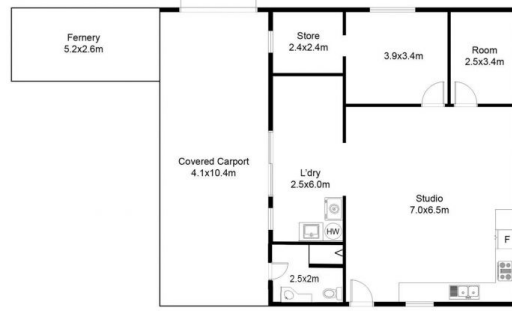
Type : House
Land Size : 1012 sqm
View : <https://www.samanthawilsonproperty.com.au/7967294>

This property include:

- Four large bedrooms
- Ample storage space under house
- Lane access with room for caravan, boat and trailer
- Side access to back yard
- Double garage plus double carport
- 26 solar panels
- Small water tank
- 1012 sqm approx. block

Added attraction is the fully self-contained studio with parking and rear lane access.

7 WOODBURN STREET, WOODBURN



UP STAIRS

DOWN STAIRS



Scale in metres. Dimensions are approximate. All information contained herein is gathered from sources we believe to be reliable, however we cannot guarantee its accuracy and interested persons should rely on their own enquiries.

POWERED BY **SMILE ELITE™**
PROUD PARTNERS WITH SYDNEY COUNTRY LIVING