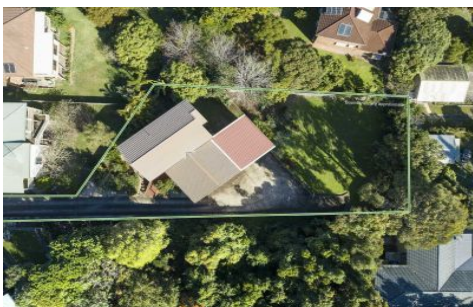


SAMANTHA WILSON

PROPERTY



10 Riverview Street EVANS HEAD NSW

4  3  4 

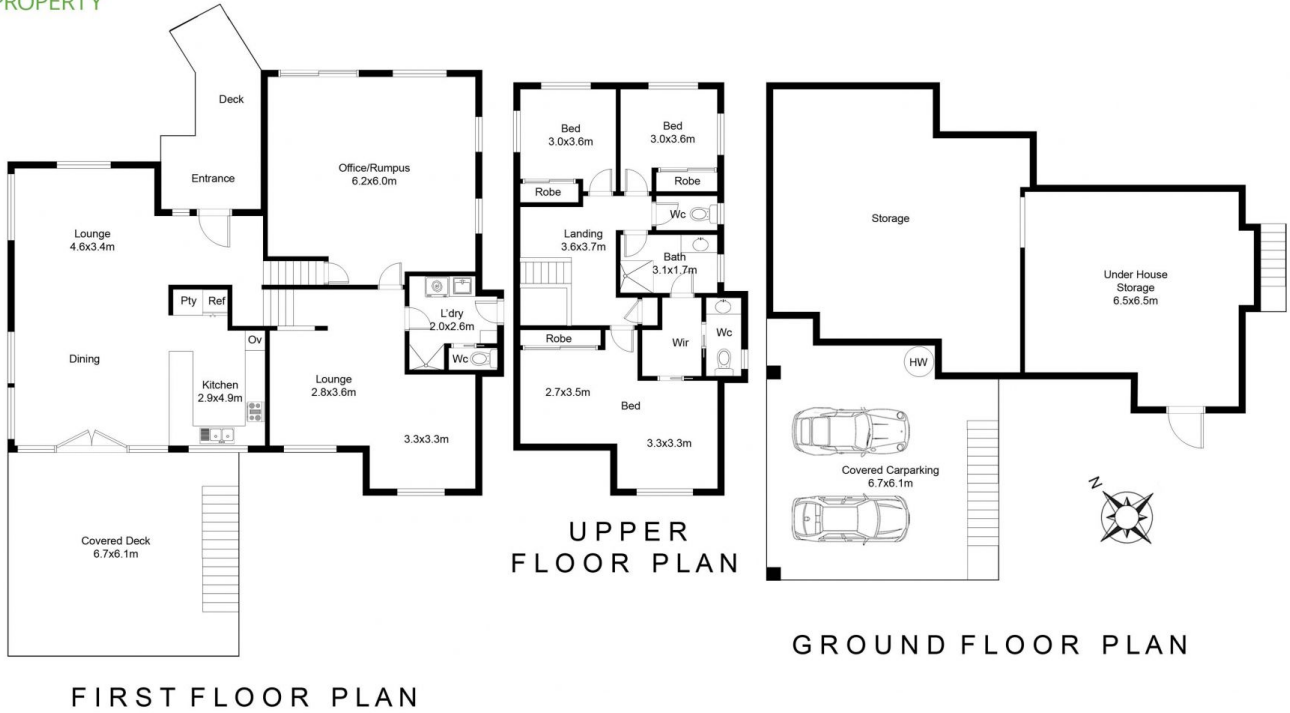
This truly unique property features three levels of spacious living with open plan kitchen, dining and lounge area, leading out onto an undercover entertaining deck taking advantage of the river views including the breathtaking sunsets.

The moment you enter this property you know you have found a "hidden gem" of privacy. One of only two blocks of 1445sqm, it has an abundance of potential for the right buyer.

Colorbond fencing on all boundaries and a large concreted turn around driveway at the bottom of the block.

This property is in immaculate condition:
Huge master bedroom with built in robes and ensuite
Bespoke stainless steel internal staircase balustrade

Type : House
Land Size : 1445 sqm
View : <https://www.samanthawilsonproperty.com.au/7967290>



Scale in metres. Dimensions are approximate. All information contained herein is gathered from sources we believe to be reliable, however we cannot guarantee its accuracy and interested persons should rely on their own enquiries.

Powered by **SMILEELITE™**